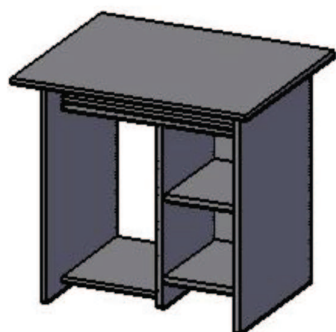


S.C. DEDEMAN S.R.L. BACAU
FABRICA DE MOBILA

CABINET "RUBIN"

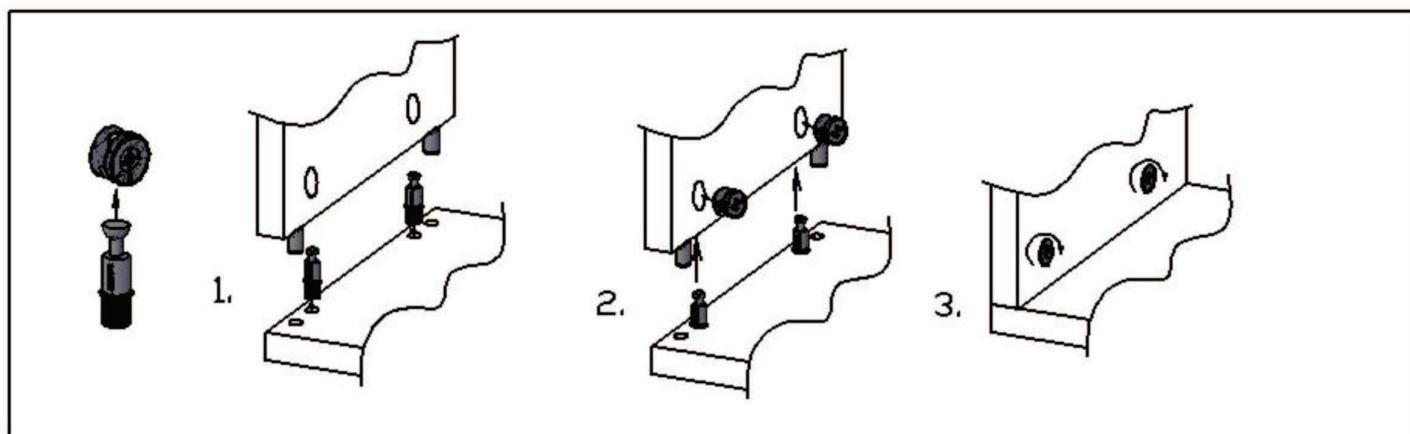
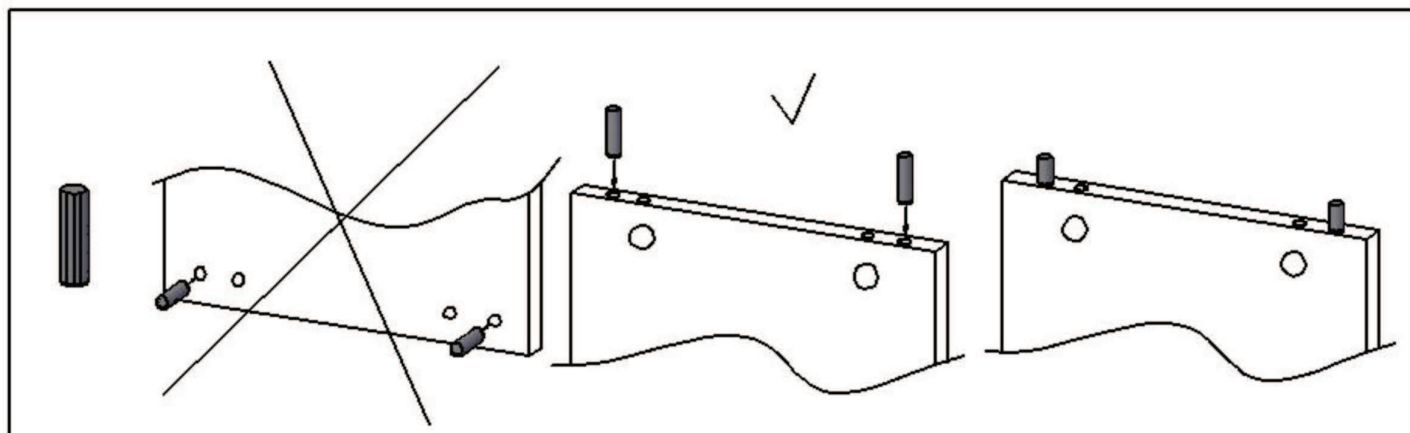
Comoda calculator, 800 x 750 x 650 mm

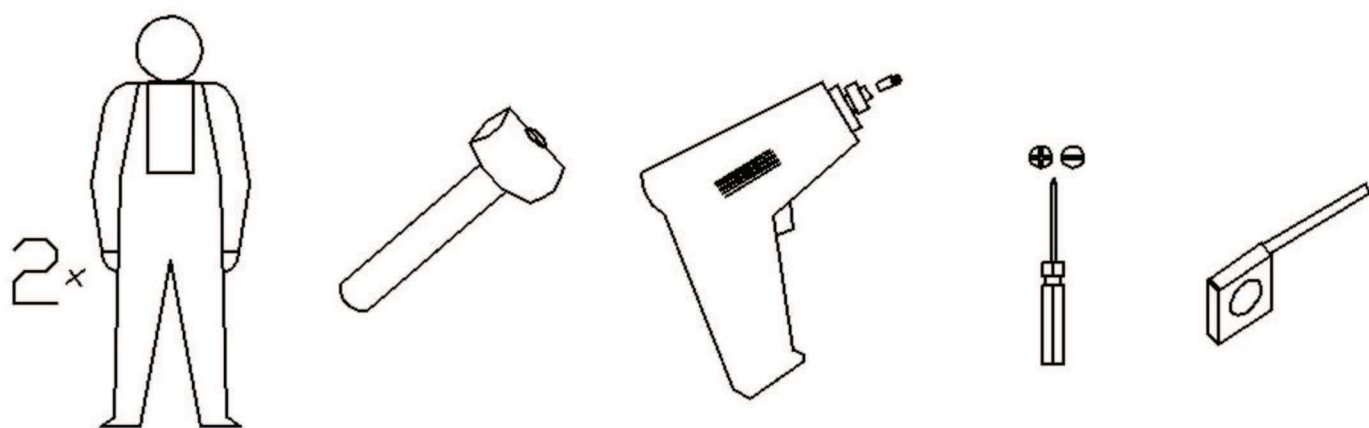













LISTA DE REPERE:

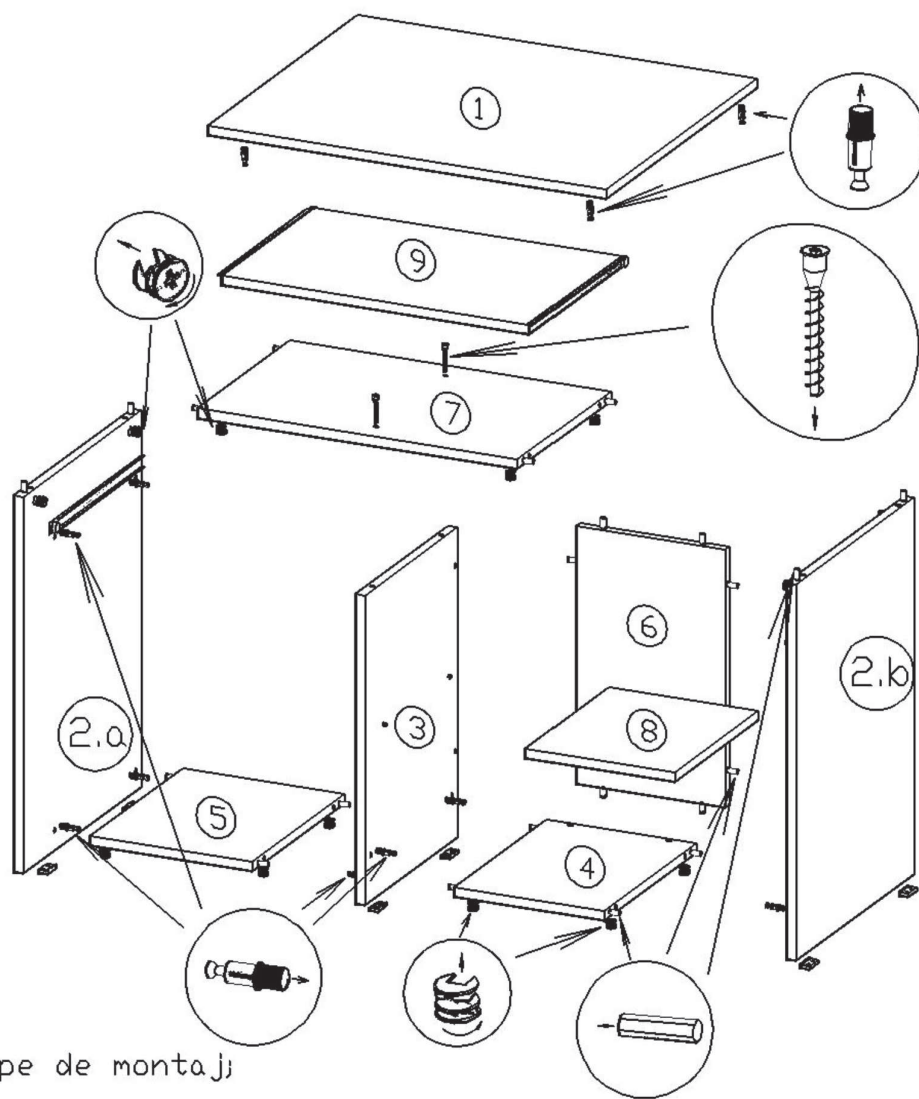
1. Blat de lucru	800 x 650 mm	1 buc.
2.a. Perete lateral stanga	710 x 510 mm	1 buc.
2.b. Perete lateral dreapta	710 x 510 mm	1 buc.
3. Perete despartitor	580 x 400 mm	1 buc.
4. Polita fixa	400 x 301 mm	1 buc.
5. Polita fixa	400 x 326 mm	1 buc.
6. Perete spate	500 x 301 mm	1 buc.
7. Polita fixa superioara	643 x 400 mm	1 buc.
8. Polita mobila	360 x 301 mm	1 buc.
9. Polita glisanta	617 x 400 mm	1 buc.

Instructiuni de montaj





REPER NR.1	DESCRIERE1	NR. BUCATI
001	 tija ansamblului demontabil	16
002	 cama cu excentric al ansamblului demontabil	16
004	 eurosurub 7 x 50 mm	2
005	 surub pentru lemn, 3,5 x 16 mm	14
020	 surub pentru lemn, 3,5 x 20 mm	12
008	 glisiera 400 mm	1
011	 capac mascare din plastic	12
012	 cheita hexagonala de 4 mm	1
013	 suport polita metalic	4
014	 cep din lemn	30
019	 talpa plata	6



Etape de montaj;

* Se identifica piesele componente.

1. Pe peretii 2.a, 3 si 2.b si pe partea inferioara a blatului 1, se fixeaza tijele demontabililor- 001, Acestea corespund gaurilor pentru cama 002 de pe fetele peretilor.
2. Cepii din lemn - 014, se fixeaza pe canturile peretilor 2.a, 2.b, pe canturile panourilor 4, 5, 6 si 7, conform desenului.
3. Se fixeaza componentele A ale glisierii 008 pe fetele peretilor 2.a si 2.b, in locurile punctate. Se utilizeaza suruburi pentru PAL 3,5 x 16, 005. Suportii polita 013 se fixeaza pe peretii 3 si 2.b.
4. Se assembleaza peretii 3 si 2.b. cu panourile 4 si 6. Se introduc camele 002 in gaurile specificate pe desen, si cu ajutorul unei surubelnite se rotesc in sensul acelor de ceasornic, pentru rigidizarea ansamblului.
5. Ansamblului realizat i se adauga panoul 5 si peretele 2.a, rigidizarea realizandu-se tot prin intermediul ansamblului demontabil tija 001 + cama 002. Deasupra peretelui 3 si intre peretii 2.a si 2.b se fixeaza polita fixa 7. Eurosuruburile 004 se rotesc in sensul acelor de ceasornic cu o surubelnita.
6. Deasupra peretilor 2.a si 2.b se pozitioneaza blatul 1, si se rigidizeaza prin introducerea camei in gaurile specificate pe desen, si rotirea lor cu o surubelnita in sensul acelor de ceasornic.
7. Elementele B ale glisierii 008 se fixeaza pe canturile politei glisante 9, cu ajutorul suruburilor 3,5 x 16, 005. Se introduce polita glisanta, cupland componentele A cu B ale glisierii.
8. Talpa plata 019, se fixeaza cu ajutorul suruburilor 3,5 x 20, 020.